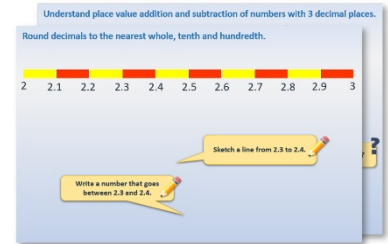


Year 1: Week 3, Day 5

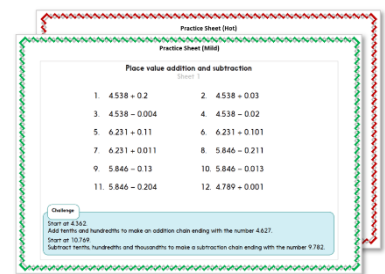
Subtract 10, 20 or 30

Each day covers one maths topic. It should take you about 1 hour or just a little more.

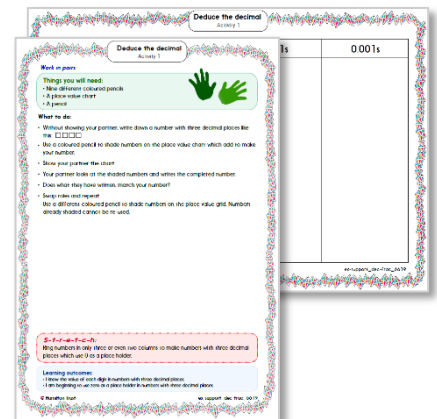
1. Start by reading through the **Learning Reminders**. They come from our *PowerPoint* slides.



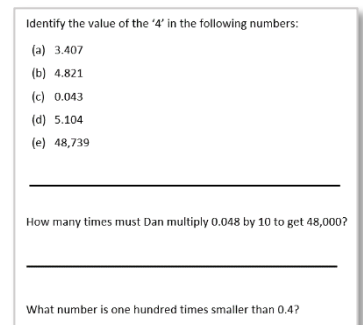
2. Tackle the questions on the **Practice Sheet**. There might be a choice of either **Mild** (easier) or **Hot** (harder)! Check the answers.



3. Finding it tricky? That's OK... have a go with a grown-up at **A Bit Stuck?**



4. Have I mastered the topic? A few questions to **Check your understanding**. Fold the page to hide the answers!



Learning Reminders

Subtract 10 and then small multiples of 10 from 2-digit numbers.

1-100 grid

1	2	3	4	5	6	7	8	9	10
11	12	13	14	15	16	17	18	19	20
21	22	23	24	25	26	27	28	29	30
31	32	33	34	35	36	37	38	39	40
41	42	43	44	45	46	47	48	49	50
51	52	53	54	55	56	57	58	59	60
61	62	63	64	65	66	67	68	69	70
71	72	73	74	75	76	77	78	79	80
81	82	83	84	85	86	87	88	89	90
91	92	93	94	95	96	97	98	99	100

How do we
find 10 less
than 70?



Spider moves one
square up the grid.

$$70 - 10 = 60$$

Now find 20 less
than 70. Spider
moves up 2 squares.

$$70 - 20 = 50$$

Learning Reminders

Subtract 10 and then small multiples of 10 from 2-digit numbers.

1-100 grid

1	2	3	4	5	6	7	8	9	10
11	12	13	14	15	16	17	18	19	20
21	22	23	24	25	26	27	28	29	30
31	32	33	34	35	36	37	38	39	40
41	42	43	44	45	46	47	48	49	50
51	52	53	54	55	56	57	58	59	60
61	62	63	64	65	66	67	68	69	70
71	72	73	74	75	76	77	78	79	80
81	82	83	84	85	86	87	88	89	90
91	92	93	94	95	96	97	98	99	100

Now find 10
less than 39. ?

$$39 - 10 = 29$$

Spider stays in the
same column. Only
the 10s digit changes.

Now find 20
less than 39.

$$39 - 20 = 19$$

Learning Reminders

Subtract 10 and then small multiples of 10 from 2-digit numbers.

1-100 grid

1	2	3	4	5	6	7	8	9	10
11	12	13	14	15	16	17	18	19	20
21	22	23	24	25	26	27	28	29	30
31	32	33	34	35	36	37	38	39	40
41	42	43	44	45	46	47	48	49	50
51	52	53	54	55	56	57	58	59	60
61	62	63	64	65	66	67	68	69	70
71	72	73	74	75	76	77	78	79	80
81	82	83	84	85	86	87	88	89	90
91	92	93	94	95	96	97	98	99	100

Can you find 30
less than 83?

$$83 - 30 = 53$$

Practice Sheet Mild

Subtracting 10s

Pick a number from the sheet. Subtract 20 from the number. Write the number sentence and use Spider to help find the answer. Aim for 10 different number sentences!

70

45

96

80

50

67

89

100

93

82

61

73

58

41

64

88

99

1-100 number grid

1	2	3	4	5	6	7	8	9	10
11	12	13	14	15	16	17	18	19	20
21	22	23	24	25	26	27	28	29	30
31	32	33	34	35	36	37	38	39	40
41	42	43	44	45	46	47	48	49	50
51	52	53	54	55	56	57	58	59	60
61	62	63	64	65	66	67	68	69	70
71	72	73	74	75	76	77	78	79	80
81	82	83	84	85	86	87	88	89	90
91	92	93	94	95	96	97	98	99	100

Practice Sheet Hot

Subtracting 10s

Pick a number from the sheet. Pick a tens card to subtract from the number. Write the number sentence and use Spider to help find the answer. Aim for 10 different number sentences!

70

96

80

50

45

67

89

100

93

82

61

73

58

41

64

88

99

Practice Sheet Hot

10s cards

Card Number Card Numbe Number Card Number Card Number Card 20 Number Card Number Card Number Card	Card Number Card Numbe Number Card Number Card Number Card 10 Number Card Number Card Number Card	Card Number Card Numbe Number Card Number Card Number Card 40 Number Card Number Card Number Card	Card Number Card Numbe Number Card Number Card Number Card 30 Number Card Number Card Number Card	Card Number Card Numbe Number Card Number Card Number Card 20 Number Card Number Card Number Card
Card Number Card Numbe Number Card Number Card Number Card 10 Number Card Number Card Number Card	Card Number Card Numbe Number Card Number Card Number Card 40 Number Card Number Card Number Card	Card Number Card Numbe Number Card Number Card Number Card 30 Number Card Number Card Number Card	Card Number Card Numbe Number Card Number Card Number Card 20 Number Card Number Card Number Card	Card Number Card Numbe Number Card Number Card Number Card 10 Number Card Number Card Number Card



1-100 number grid

1	2	3	4	5	6	7	8	9	10
11	12	13	14	15	16	17	18	19	20
21	22	23	24	25	26	27	28	29	30
31	32	33	34	35	36	37	38	39	40
41	42	43	44	45	46	47	48	49	50
51	52	53	54	55	56	57	58	59	60
61	62	63	64	65	66	67	68	69	70
71	72	73	74	75	76	77	78	79	80
81	82	83	84	85	86	87	88	89	90
91	92	93	94	95	96	97	98	99	100

Practice Sheet Answers

Subtracting 10s (mild)

70 - 20 = 50
96 - 20 = 76
80 - 20 = 60
50 - 20 = 30
45 - 20 = 25
67 - 20 = 47
89 - 20 = 69
100 - 20 = 80
93 - 20 = 73
82 - 20 = 62
61 - 20 = 41
73 - 20 = 53
58 - 20 = 38
41 - 20 = 21
64 - 20 = 44
88 - 20 = 68
99 - 20 = 79

Subtracting 10s (hot)

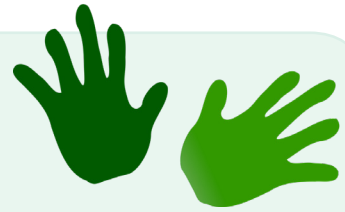
70 - 10 = 60	70 - 20 = 50	70 - 30 = 40	70 - 40 = 30
96 - 10 = 86	96 - 20 = 76	96 - 30 = 66	96 - 40 = 56
80 - 10 = 70	80 - 20 = 60	80 - 30 = 50	80 - 40 = 40
50 - 10 = 40	50 - 20 = 30	50 - 30 = 20	50 - 40 = 10
45 - 10 = 35	45 - 20 = 25	45 - 30 = 15	45 - 40 = 5
67 - 10 = 57	67 - 20 = 47	67 - 30 = 37	67 - 40 = 27
89 - 10 = 79	89 - 20 = 69	89 - 30 = 59	89 - 40 = 49
100 - 10 = 90	100 - 20 = 80	100 - 30 = 70	100 - 40 = 60
93 - 10 = 83	93 - 20 = 73	93 - 30 = 63	93 - 40 = 53
82 - 10 = 72	82 - 20 = 62	82 - 30 = 52	82 - 40 = 42
61 - 10 = 51	61 - 20 = 41	61 - 30 = 31	61 - 40 = 21
73 - 10 = 63	73 - 20 = 53	73 - 30 = 43	73 - 40 = 33
58 - 10 = 48	58 - 20 = 38	58 - 30 = 28	58 - 40 = 18
41 - 10 = 31	41 - 20 = 21	41 - 30 = 11	41 - 40 = 1
64 - 10 = 54	64 - 20 = 44	64 - 30 = 34	64 - 40 = 24
88 - 10 = 78	88 - 20 = 68	88 - 30 = 58	88 - 40 = 48
99 - 10 = 89	99 - 20 = 79	99 - 30 = 69	99 - 40 = 59

A Bit Stuck? Spider's exercises

Work in pairs

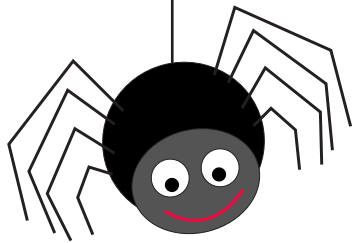
Things you will need:

- Spider's counting strips
- A pencil

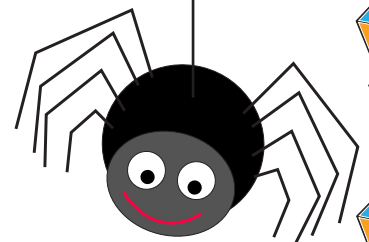


What to do:

- Choose one of Spider's counting strips with Spider at the top. Count in 10s to help you to fill in the missing numbers.
- Now choose a strip with Spider at the bottom.
- Fill in as many strips as you can.



3	
13	
23	
33	35
43	45
53	55
63	65
	75
	85
	95



S-t-r-e-t-c-h:






Choose one of the counting strips with Spider at the bottom. Count back in 10s to fill in the missing numbers.

Learning outcomes:

- I can count on in 10s from a single-digit number using a 1-100 grid to help.
- I am beginning to count back in 10s from numbers between 90 and 100 using a 1-100 grid to help.

A Bit Stuck?

Spider's exercises

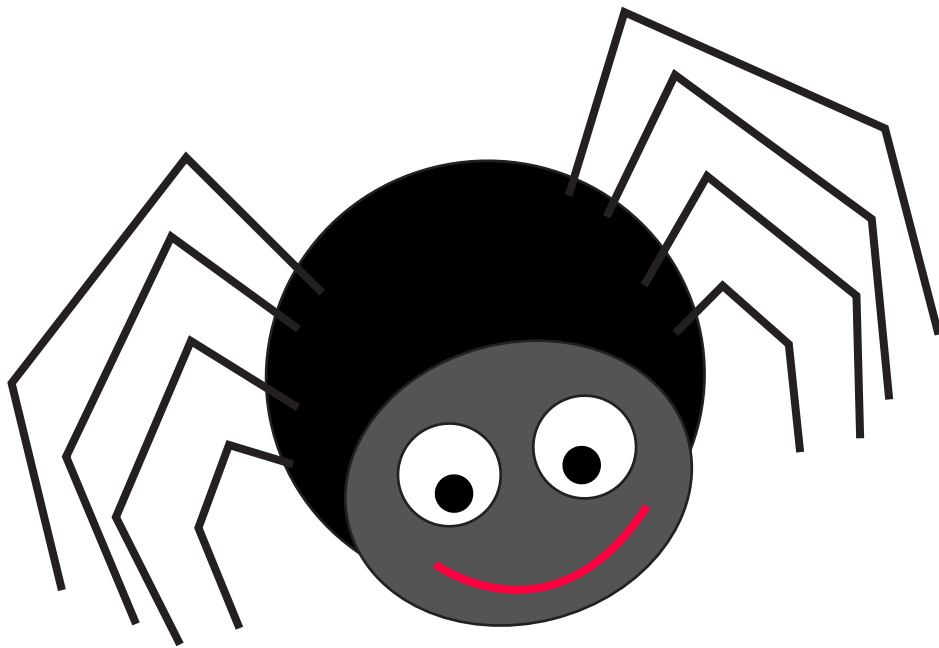
3 	8 	4 	9 	7 
13	18	14	19	17
23	28	24	29	27
33	38	34	39	37
43	48		49	47
53	58		59	
	68		69	
	78			

A Bit Stuck?

Spider's exercises

	32	
45	42	
55	52	
65	62	61
75	72	71
85	82	81
95	92	91

A Bit Stuck?
Spider's exercises



Check your understanding

Questions

True or false?

- $34 - 20 = 32$
- $62 - 20 = 42$
- Ten less than 55 is 45
- $85 = 55 - 30$
- $84 - 20 = 82$
- When you subtract a 10s number from a 2-digit number, both digits will change.

Write some 'true' additions and subtractions to replace any above which are false.

Fold here to hide answers

Check your understanding

Answers

True or false?

- $34 - 20 = 32$ False, $34 - 20 = 14$.
- $62 - 20 = 42$ True.
- Ten less than 55 is 45 True.
- $85 = 55 - 30$ False, $85 = 55 + 30$.
- $84 - 20 = 82$ False, $84 - 20 = 64$.
- When you subtract a 10s number from a 2-digit number, both digits will change.
False, only the 10s digit changes, e.g. $47 - 20 = 27$ or $63 - 30 = 33$.

Write some 'true' additions and subtractions to replace those above which are false.

Children can check these using Spider counting on a 1-100 grid. Errors arise when children count back in 1s, rather than 10s, or include the starting number in the count, so saying $64 - 30 = 44$.